

# TEAM EVENTS **SERVICE** **BROCHURE**



# WHO WE ARE

Welcome to Essentia's Team Event Service Brochure!

We understand the importance of effective teamwork and collaboration in achieving business objectives and creating a positive work environment. We are dedicated ourselves in creating unique and engaging team events.

Our passion lies in assisting teams to build trust, enhance communication, and develop effective problem-solving skills which are essential to the specific needs and goals of each organization. We firmly believe that team events are not just about having fun, but about creating lasting and improving team performance. That's why we work closely with each organisation to design customized programs that address their unique challenges and goals.

We use proven techniques and methodologies to ensure the effectiveness, productivity, and engagement of our programs. We are committed to creating memorable and impactful team experiences that inspire them to work together more efficiently and explore their full potential.

We hope you enjoy studying our service brochure which includes some examples of real-life success stories from past learners. Are you ready to take your team to the next level? Call us and discuss with our consultant to learn more about how we assist your organization in achieving your goals! We look forward to seeing you at our events!

## OUR CREDENTIALS



# ESSENTIA TEAM EVENTS

THE  
**UNSTOPPABLE**  
TEAM™

MAKING OF  
**RAINBOW**  
MEGA-CITY™

LEGO®  
**SERIOUS**  
PLAY®

TEAM  
**HUNT**  
SQUAD™

TEAM  
**BOMB**  
SQUAD

TETRAMAP®  
**TEAM**  
LEARNING

# THE UNSTOPPABLE TEAM™

SCALE: 20 - 80 OR MORE

DURATION: 3 HOURS

The Unstoppable Team™ is an exceptional team-building activity that cultivates a strong culture within the group. Through seamless collaboration, effective communication, and dynamic problem-solving, team members are challenged to work together harmoniously. Success hinges on factors such as precise timing, meticulous precision, and flawless synchronization. The ultimate objective is to create a visually captivating and awe-inspiring chain reaction that deeply engages and leaves an indelible impression on all participants.

## .. HOW IT WORKS ..

Teams receive instruction sets to ignite discussions within their group. They design, build, and experiment with multiple ideas to form a simple machine, integrating them together for further testing. Collaboratively, they connect their series of simple machines, ensuring a seamless flow from one to the next. In the thrilling grand finale, the contraption is triggered, cascading through each component with captivating precision.

## SAMPLE CASE

**Client:** A Germany-based global technology powerhouse and leading provider of innovative and sustainable technologies

**Purpose:**

- Appreciating different perspectives
- Building trust
- Learn to be compassionate and communicative
- Leadership development

**Duration:** Half-day team event

**Scale:** 40 learners



## .. APPLICATIONS ..

By incorporating the chain reaction game into the learning and development program, learners can apply the skills they learn in a practical and engaging way. This can lead to higher retention of information and a more effective learning experience overall.



**Leadership  
Alignment**



**Strategy & Planning  
Workshop**



**Trust, Engagement and  
& Uplift Team Spirit**



**Strategic Meeting  
for New Initiatives**

## .. KEY TAKEAWAYS ..

A chain reaction team event facilitates collaboration, problem-solving, leadership, time management, creativity, and fun. It is an effective way to develop teamwork skills while providing an enjoyable and memorable learning experience for learners.

**1** **Build a culture of collaboration** where all parties work towards a common goal.

**2** **Foster open communication** for building trust and maintaining positive relationships.

**3** **Increase efficiency** by delegation and effective time management.

**4** **Practice agility and innovation** with tight timeline and limiting resources.

**5** **Effective time management** to ensure that each part of the chain reaction is completed on time.

**6** **Create memorable team experience** from the process and the excitement from the final result.



### RECOMMENDED

“Excellent team experience! The program allows the team to brainstorm together and combines our creativity to build an effective chain reaction. It fosters team innovation and encourages the exploration of diverse perspectives.”

“When we encountered obstacles, we learn to solve the problem by discussing with team members, analysing the situation and generate solutions together. This collaborative approach not only facilitated the exchange of ideas but also ensured that everyone was on the same page.”



# MAKING OF RAINBOW MEGA-CITY™

SCALE: 12 - 200

DURATION: 3 HOURS

Our signature program helps to facilitate long-term team building through fostering genuine connections, deeper discussions, and processing. The group needs to work on a common goal by contributing their own efforts. All actions of each member must be well-coordinated within their own responsibility.

## .. HOW IT WORKS ..

Making of Rainbow Mega-City™, our signature program, fosters a comprehensive understanding of strengths, development needs, and interests among participants. By collaboratively constructing the floating city, individuals assume specific roles that allow them to excel at their fullest potential. This program facilitates deep connections, eliminates blind spots and biases, and establishes effective communication channels. It provides the perfect solution for tackling challenges together, ensuring learners maintain a harmonious, joyful, and seamless flow of chemistry and momentum.

## .. APPLICATIONS ..

This transformative program is specifically designed to enhance problem-solving skills through experiential learning. Participants are organized into teams and tasked with constructing floating cities using limited resources. By stepping out of the office environment, the program ignites creativity and a sense of adventure as team members collaborate on a unique, unfamiliar task. Through reflective observation, learners gain self-awareness by connecting their behaviors to achieved results, providing an opportunity to explore their blind spots. The program fosters an appreciation for mistakes as integral to success, offering guidance and facilitation on leveraging failures as stepping stones towards achieving success.



Facilitate  
communication



Team  
alignment



Enhance  
problem  
solving skills



Create One Team  
One Goal Spirit

The process of making the hospital (city) stimulates our team's innovative ideas and smooth interactive communication among each other.

**I am pleased to see the team collaboration was effective and efficient to make the dreams work.**

The workshop was impressive and everyone had a great time. Thank you for all the efforts.



Dr. Kenneth Tsang

Chief Executive Officer,  
Gleneagles Hospital Hong Kong

## .. KEY TAKEAWAYS ..

Building a floating city empowers learners to venture beyond their comfort zones and collaborate on a novel and challenging task. Through this endeavor, teams discover the indispensable role that each member plays in achieving success. Throughout the activity, participants develop strategies to solve the presented problem, leading to a noticeable boost in mutual confidence and trust.



### Promote Problem Solving & Creativity

to analyse situations, evaluate different options, and make decisions to overcome obstacles



### Foster Sense of Camaraderie

a sense of unity and fosters a cooperative mindset, a shared experience that strengthens camaraderie



### Encourage Collaboration & Communication

require effective communication and active listening among team members



### Reinforce Empathy & Support

opportunities to offer help, support, and encouragement to teammates



# LEGO® SERIOUS PLAY®

SCALE: 8 - 80 OR MORE

DURATION: 3-12 HOURS

LSP (LEGO® Serious Play®) empowers learners to think with their hands and listen with their eyes. This creative methodology facilitates communication through visual, auditory, and kinaesthetic channels. It is a hands-on, lean-forward technique that encourages active participation and achieves 100% buy-in from all participants.

## .. HOW IT WORKS ..

Building a high-performing team from members with diverse backgrounds and capabilities can be a significant challenge. In many companies, teams often function as disconnected hubs rather than cohesive units. The lack of cooperation and limited creativity sharing hampers team performance. LEGO® SERIOUS PLAY® injects the creativity and inspiration of play into real business situations, revitalizing team spirit, communication, and teamwork through an enjoyable and engaging approach.

## .. APPLICATIONS ..



Co-create  
team charter



Leadership  
alignment



Strengthen  
team bonding



Creativity &  
innovation

Using facilitated and structured tasks, learners engage in constructing models with LEGO® bricks. Throughout the process, participants have the opportunity to explore, question, and gain deeper insights into their own identity and role within the team. The program enables participants to develop action plans and strategies to tackle specific goals or challenges that have been identified. Furthermore, they engage in discussions on how the shared experiences and newfound understandings can be translated into actionable steps or transformative changes within the team.

**Our team had a fantastic experience in LEGO® Serious Play® in which all learners were highly engaged.**

The workshop allowed us to discover different personalities and skillsets, helping us to unleash the potentials and to explore the possibilities of our people. Through the interactive activities, we learned something new and achieved the goal of building better relationships among our people. It is a significant impact to all of us. I would like to thank Essentia's facilitators for such a dynamic, engaging and rewarding workshop. We gained immensely at the workshop and enjoyed how the facilitators made it pragmatic and relatable with real-life experiences. Thank you once again.



**Mr. Aloysius Lai**

Executive Director,  
Head of Technology &  
Operations  
UOB Hong Kong



## .. KEY TAKEAWAYS ..

LSP (LEGO® Serious Play®) offers remarkable flexibility for activities that can be applied to both small and large teams. This open-ended tool allows for diverse interpretations, fostering a vibrant exchange of ideas, encouraging critical thinking, and stimulating meaningful dialogue among participants.

### FOR LEADERSHIP

1

#### Goal & vision setting

empowers the leadership team to articulate their direction through easily envisioned and understood models, fostering clarity and alignment.

2

#### Leadership identity

gain self-awareness of leader's unique leadership goals and styles, enabling them to become more effective and impactful leaders.

3

#### Communication

learn to actively listen and explore effective communication strategies within their team. Acquire the skills and confidence in various types conversations.

### FOR TEAM

1

#### Communication

set up a safe environment for the team to listen attentively and have valuable sharing and understanding.

2

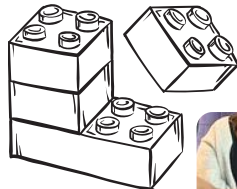
#### Team bonding

non-verbal communication with lego bricks can be more open which allows connection on a deeper level.

3

#### Empowerment

identify challenges in actual teamwork and help create potential solutions to tackle these obstacles.



## SAMPLE CASE

**Client:** Global leader in designing, marketing and distributing innovative footwear, apparel and accessories

**Purpose:** Co-creating team vision and building "One Team One Goal"

**Duration:** Full-day team event

**Scale:** 17 learners

### Words from Learners

*This is an amazing program which allows us to discover the strengths of the team and what makes it work! It has made such an impact on us!*

*The workshop was fun! It had unleashed my creativity and at the same time insightful! I also appreciated that it covered both individual and team reflections which was valuable for me and the team..*



# TEAM HUNT SQUAD™

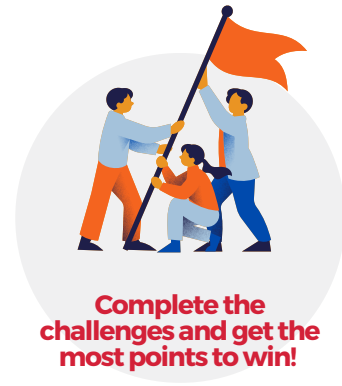
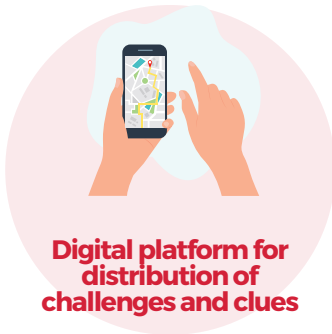
SCALE: 12 - 100 OR MORE

DURATION: 2-3 HOURS

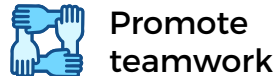
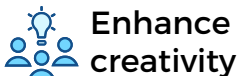
Team Hunt Squad™ promotes teamwork, communication, problem-solving, and creativity. By working together to solve clues and find items, team members learn to rely on each other's strengths and develop a sense of camaraderie. It also encourages learners to think outside the box and come up with creative solutions to challenges, which can translate to improved problem-solving skills in the workplace.

## .. HOW IT WORKS ..

Become part of a squad team to solve clues, complete missions, and navigate way through a hunt. It combines both intellectuality and physicality, the program will bring unique opportunity for your team to have fun, build relationships, and strengthen team spirit!



## .. APPLICATIONS ..



This fantastic team event begins by identifying specific goals or objectives of the team and organization. Once these are established, we will tailor the experience to achieve those aims. The tasks are crafted to encourage collaboration and communication among team members, such as solving problems or tackling physical challenges. This promotes open communication and ensures equal participation opportunities for everyone. Typically held outdoors, learners will venture into scenic locations like Sai Kung or Macau to search for clues or items. This event offers an excellent opportunity for learners to enjoy fresh air, unwind, and escape the confines of the office environment.



**The Team Hunt Squad™ was an absolute blast! It brought out our competitive spirit, encouraged collaboration, and challenged our problem-solving skills.**

We had so much fun exploring and discovering new things in Sai Kung together. It was an unforgettable experience that strengthened our team bond. Highly recommended.



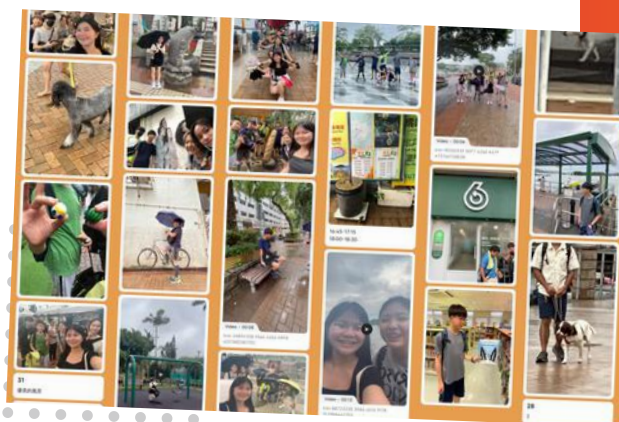
Mr. Paul Poon

Preacher  
Captain Church

## .. KEY TAKEAWAYS ..

Team Hunt Squad™ promotes creativity and outside-the-box thinking as teams must come up with unique solutions to complete each task. Additionally, the event can help build trust and improve relationships among team members, which can lead to better teamwork and increased productivity in the workplace.

- 1 Promote strategic thinking and time management skills** by strategically plan and solve clues to complete challenges.
- 2 Encourage leadership skills** by providing opportunities for team members to take on leadership roles.
- 3 Improve communication and delegation** where learners are required to communicate tightly in completing the challenges on time.
- 4 Build trust and relationships among team members** where the team needs to rely on each other when completing the challenges.
- 5 Enhance creativity** in problem-solving and encourage innovative thinking.



# TEAM BOMB SQUAD

SCALE: 12 - 30 OR MORE

DURATION: 3 HOURS

Team Bomb Squad is an excellent team activity which requires learners to solve a complex problem together under pressure. By diffusing a simulated bomb, learners must rely on each other's strengths and skills to complete the task successfully. Team Bomb Squad can be customized to fit the needs of different groups, making it suitable for a wide range of team-building events, from corporate retreats to school events.



## .. HOW IT WORKS ..

Immersed in a room with a digital bomb, the 'defusers' are confronted with its intricate modules, yet lack the knowledge to defuse it. Meanwhile, in a separate room, the 'experts' possess the manual containing vital clues, but are unable to see the bomb. The entire team must depend on their communication skills to relay crucial information between the defusers and the experts, working collaboratively to defuse the bomb and ensure success.

## .. APPLICATIONS ..

It is an immersive and dynamic simulation that presents teams with a thrilling challenge: defusing a bomb within a time limit. This engaging experience tests participants' ability to work cohesively under pressure, while injecting an element of fun. Effective communication, problem-solving, and critical decision-making are key as teams navigate the intense situation.



**Team adaptability**



**Learning agility**



**Resilience**



**Delegation & organization**

## SAMPLE CASE

**Client:** A French multinational insurance company headquartered in Paris. It provides investment management and other financial services.

**Purpose:**

- Team engagement workshop for internship program with a theme about leadership development

**Duration:** Half-day team event

**Scale:** 18 learners

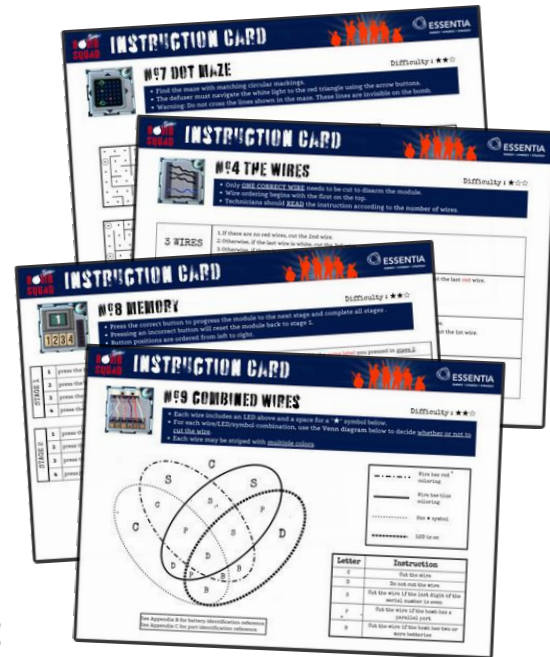
## .. KEY TAKEAWAYS ..

Team Hunt Squad is an exciting and tension-filled activity that encourages creativity, ingenuity, and collaboration. Success in completing the mission relies on the learners' ability to work together, think outside the box, and utilize their problem-solving skills to overcome challenges and reach the thrilling conclusion of the game.

- 1 Stress management** learn to remain calm and composed under the ticking clock and tense atmosphere.
- 2 Building-up resilience** learners may face setbacks or failures and learn to improve their resilience along the way.
- 3 Decision-making** learn to make quick and effective decisions under pressure.
- 4 Emotional intelligence** provides an opportunity to develop emotional intelligence and learn how to manage emotions in stressful situations.
- 5 Adaptability** encourage learners to adapt quickly to new situations and think on their feet.
- 6 Communication skills** learners must relay complex information under time pressure and helps improve listening, speaking and sharing of information.

### Learners' Feedbacks:

- It's an unconventional team activity that simulates a high-pressure situation where I learn how to manage stress and anxiety.*
- The team experience had fostered trust-building and camaraderie because we need to rely on team members' skills and information they provided. This helps to build mutual trust and strengthening team relationship.*
- The activity was challenging and the pace of the activity was fast! Our team got so excited when the bomb was defused!*



# TETRAMAP® TEAM LEARNING

SCALE: ANY SIZE

DURATION: 2 - 12 HOURS

Originated from New Zealand; TetraMap® is a communication & behavioral tool which uses nature as metaphor to help increasing personal well-being and team cohesion. By providing clarity on individual behavioral preferences and effective ways to interact with others, TetraMap® empowers learners to improve their communication skills and strengthen team dynamics. With a proven track record spanning over 20 years in more than 25 countries and regions, TetraMap® is a globally trusted learning tool.

## .. HOW IT WORKS ..

TetraMap® workshops provide participants with a comprehensive package that includes the original workbook, instruments, learning materials, and engaging activities. These resources are carefully designed to enhance the learning experience and maximize the benefits of the TetraMap® methodology.

**This is a dynamic workshop and is one of the most interactive sessions we have had for experiencing effective communication.**

ESSENTIA provides a fruitful day with hands-on practice to our people which is positive, productive and insightful. TetraMap is intuitive to learn, easy to understand and apply. Though our learners come from various backgrounds and departments, the facilitator can manage the situation and provide valuable feedback which is beneficial to them! We would like to recommend the tool and the workshop!



## .. APPLICATIONS ..

We take learning to a new dimensions beyond the binary right/wrong and strengths/weaknesses approach. TetraMap® provides a refreshing, intuitive framework to explore the Elements of nature - your own nature, the nature of others, the nature of organisations, the nature of leadership, the nature of sustaining learning.

In a TetraMap® workshop, we start with "Why are you like that?" process and work along with TetraMap® workbook by looking at situations and challenges in order to advance communication skills. Learners will have a better understanding of themselves and team members to encourage team cohesion through reducing conflicts and increasing effective communication.



**Ms. Irene Lau**

Head of Human Resources,  
Habib Bank Zurich  
(Hong Kong) Limited

## .. KEY TAKEAWAYS ..

Navigating diverse communication and behavioral styles can be a challenge. Each day, we encounter individuals with unique approaches. TetraMap® workshops offer a trusted framework to identify and adapt to these styles. Harness the power of TetraMap® to foster understanding, reduce conflict, and enhance effective communication both in the workplace and at home. Gain the skills to bridge differences and build harmonious relationships with others.

1

### Self-awareness

deepening self understanding and own behaviours when we interact with other people.

2

### Effective Communication

use the understanding of the elements to provide constructive feedback.

3

### Setting team goals

a set of team principles are designed and established by the entire team.

4

### Capability building

create a rapid shift in behaviour and capability to achieve desired outcomes faster.

5

### Incorporating diversity

recognising the importance of diversity within a team and that true team strength lies in valuing differences.

6

### Team wellness

team members are developing a positive mental attitude and managing their own responses to difficult situations by reframing them.



## SAMPLE CASE

**Client:** A public hospital's nursing department

### Purpose:

- Be self-aware of own behavioral preference as a leader
- To understand the attributes and behaviors of an effective leader
- Acquire skills and build competence when leading diverse team and people
- Apply suitable strategies to build team cohesiveness
- Utilize appropriate responses in accordance with different profiles to achieve collaborative communication

**Duration:** Multiple half-day learning events (onsite & online)

**Scale:** Total of 120 learners

### Learners' Feedbacks:

*It was a great chance to learn more about myself and the team. TetraMap® model is intuitive, it is easy to apply and I believe I will be more conscious about other's perspectives and become a better communicator.*

## About Essentia

At ESSENTIA, we provide impactful learning events including team culturing, learning and development programs by accredited and qualified professionals. Our diverse team of facilitators and international toolboxes can help your people to identify and address any opportunities and potentials. As a result, to empower employees to be better-rounded and skilled at their aspect of roles. We believe in a hands-on, interactive approach to learning, and our programs incorporate a variety of teaching methods to ensure maximum engagement and retention. Whether you're looking to develop your own skills or enhance the performance of your team, we have the expertise and resources to help you succeed.



### contact us



+852 3993 1489



[www.essentia.com.hk](http://www.essentia.com.hk)



[LoveLearning@essentia.com.hk](mailto:LoveLearning@essentia.com.hk)



20/F., Leighton Centre,

77 Leighton Road, Causeway Bay, Hong Kong